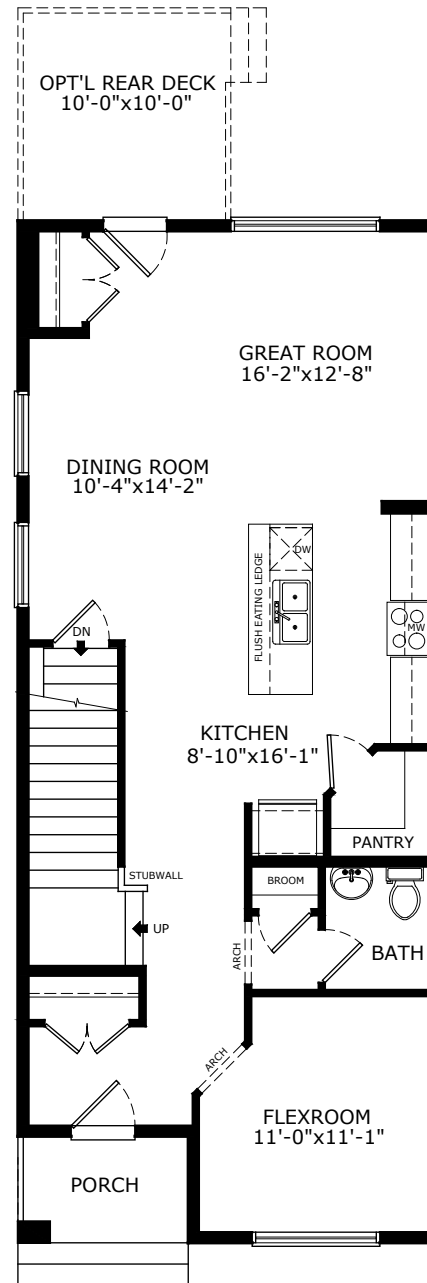
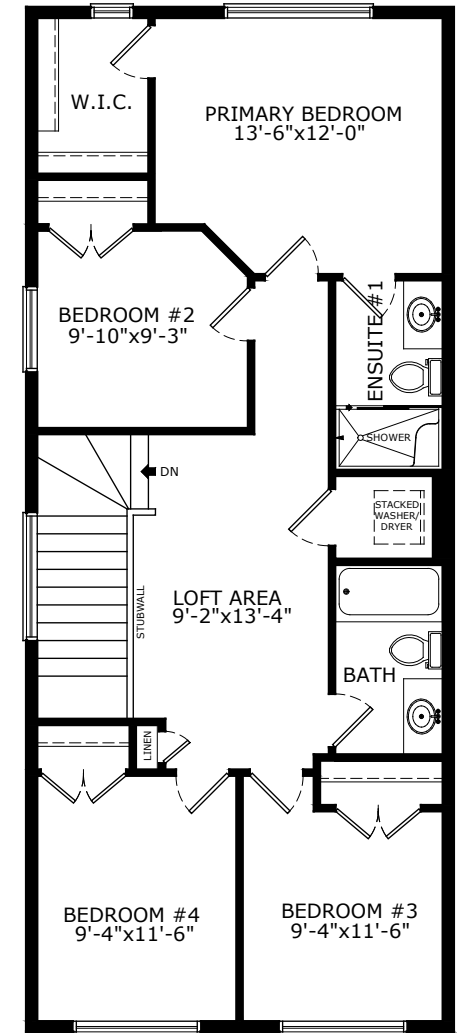


1820 SQ FT
4 BEDS
2.5 BATHS

JADE



MAIN: 920 SQ FT



UPPER: 900 SQ FT

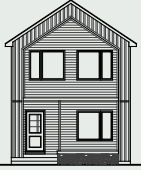
Sterling HOMES

A QUALICO Company

ELEVATIONS



COLONIAL



CONTEMPORARY
ARTS & CRAFTS



CONTEMPORARY
PRAIRIE



CRAFTSMAN



FARMHOUSE



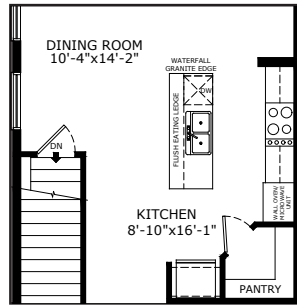
MODERN



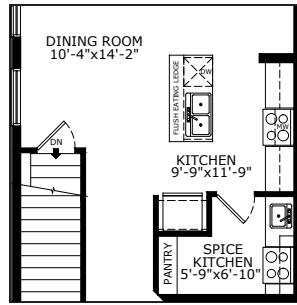
PRAIRIE

MAIN FLOOR OPTIONS

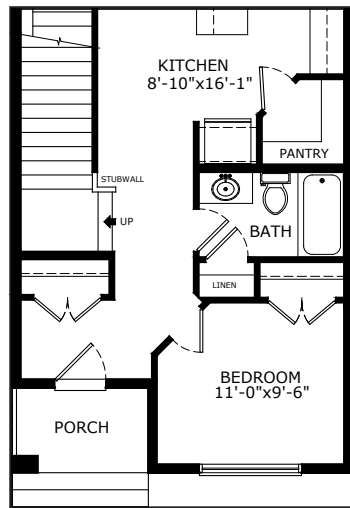
OPTIONAL EXECUTIVE KITCHEN



OPTIONAL SPICE KITCHEN

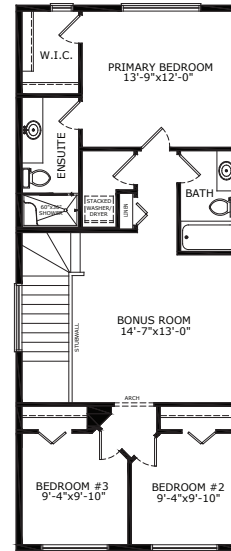


OPTIONAL FULL BATH WITH BEDROOM

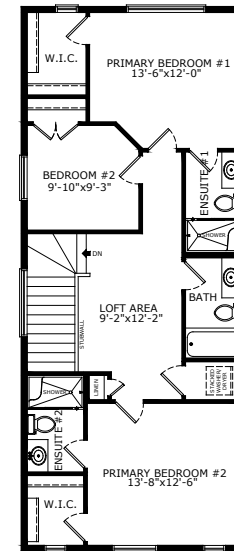


UPPER FLOOR OPTIONS

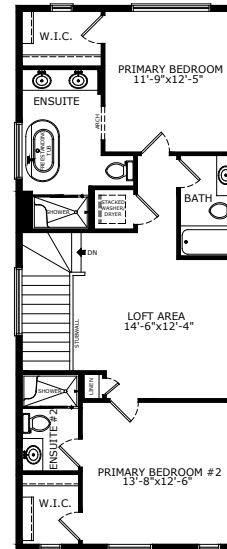
OPTIONAL
3 BEDROOMS



OPTIONAL 2ND
PRIMARY BEDROOM

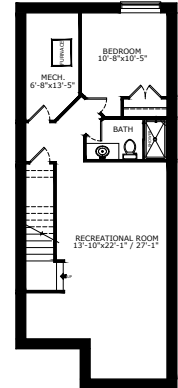


OPTIONAL
ENSUITE

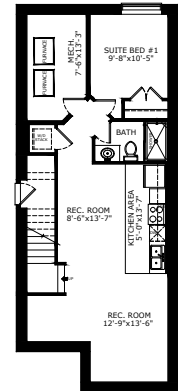


BASEMENT OPTIONS

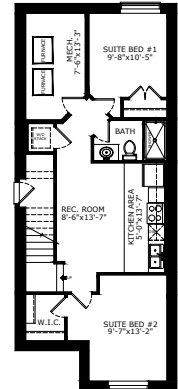
STANDARD 670 SQ FT



1 BEDROOM 'LEGAL SUITE' 654 SQ FT



2 BEDROOM 'LEGAL SUITE' 654 SQ FT



Scan here
for floorplan
options and
more

*Legal Suite availability varies by community and municipal regulations.

Build Your Life

STERLINGCALGARY.COM